



SPECIFICATIONS

1 General

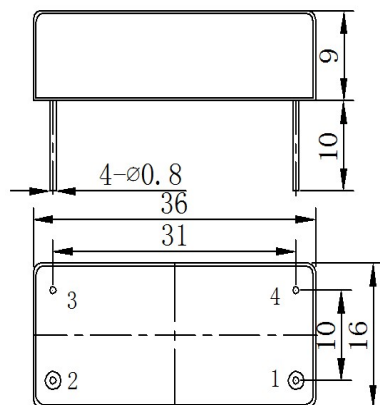
Part Number	Description
LB133M10C5A	133MHz LC filter, DIP package

2 Revision History

Revision	Released	Revision Detail
R1	2024-6-11	Initial Release

3 Electrical Specification

Item	Typical
Nominal Frequency (Fc, MHz)	133
Insertion Loss (dB)	≤7.0
Ripple Within Pass Band (dB)	≤1.0
Bandwidth at -3dB (MHz)	≥10
Bandwidth at 40dB Attenuation (MHz)	≤32
I/O Impedance (ohm)	50
Operation Temperature (°C)	-20 ~ +70
Storage Temperature (°C)	-50 ~ +90
Package Size (mm)	36x16x9



Pin No.	Description
1	Input/Output
2	Output/Input
3,4	Ground

Bottom View Unit:mm